

Blackwork Stitches Sampler: A Comprehensive Guide to Blackwork Embroidery

Step into the world of blackwork embroidery, an ancient needlework technique known for its intricate geometric patterns and striking black threads against white fabric. This Blackwork Stitches Sampler is your ultimate guide to the essential stitches, their variations, and how to combine them to create stunning blackwork designs.



Blackwork Stitches Sampler Book 1 Blackwork Pattern

by Jonathan Black

★★★★★ 5 out of 5

Language : English

File size : 9029 KB

Print length : 168 pages

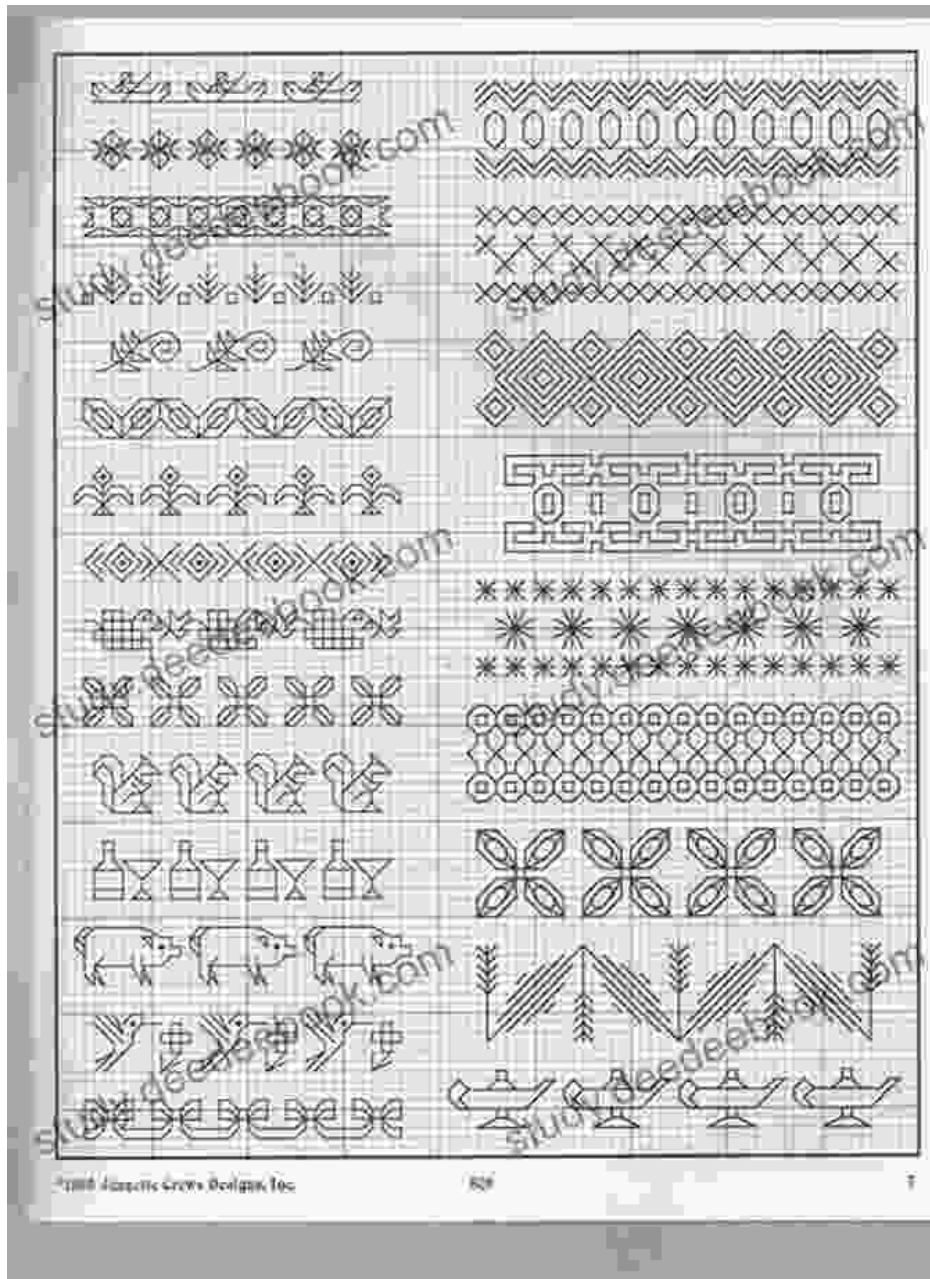
Lending : Enabled

Screen Reader : Supported



Essential Blackwork Stitches

1. Backstitch



The backstitch is the foundation of blackwork embroidery. It creates a solid black line by alternating forward and backward stitches.

2. Running Stitch

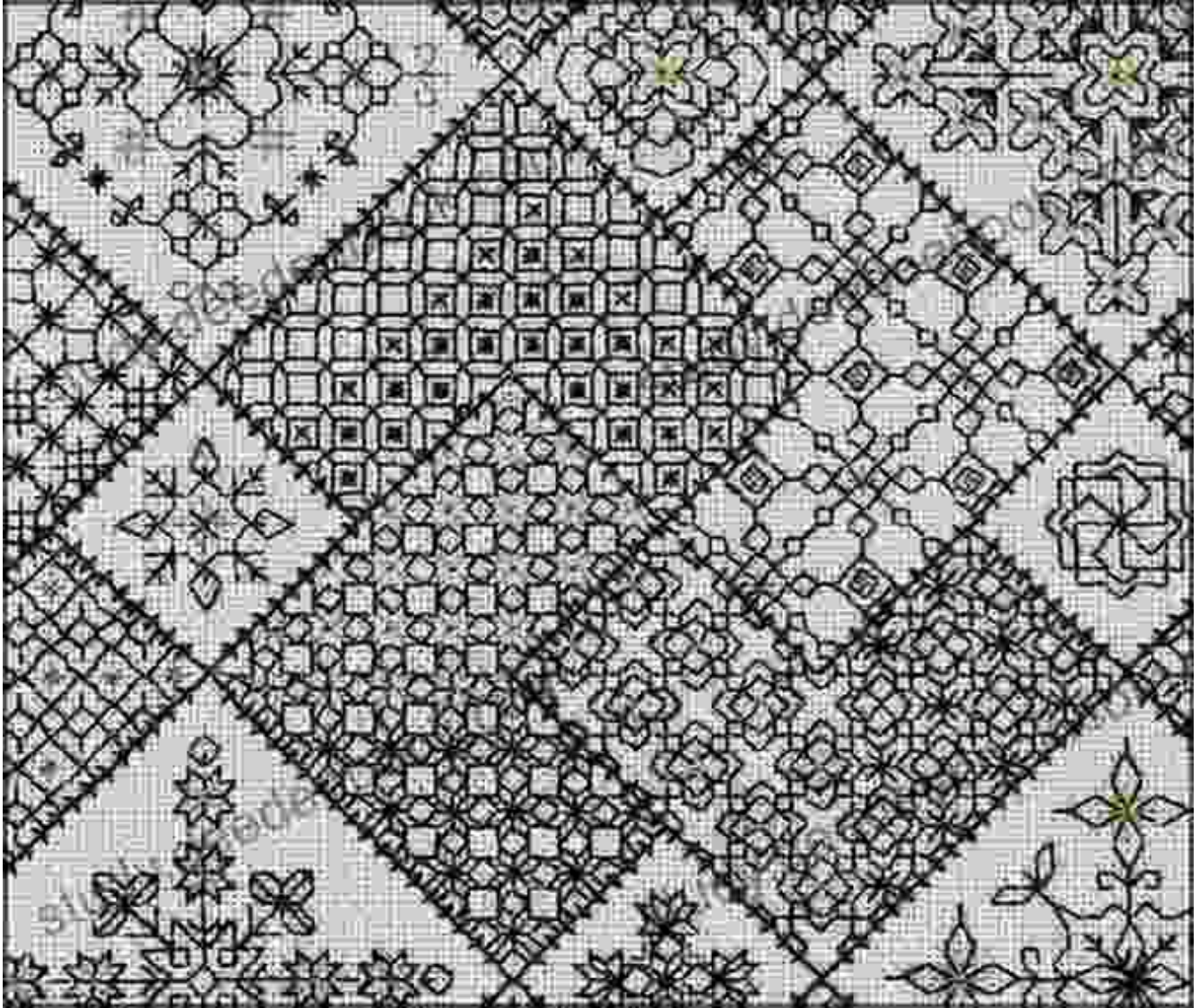
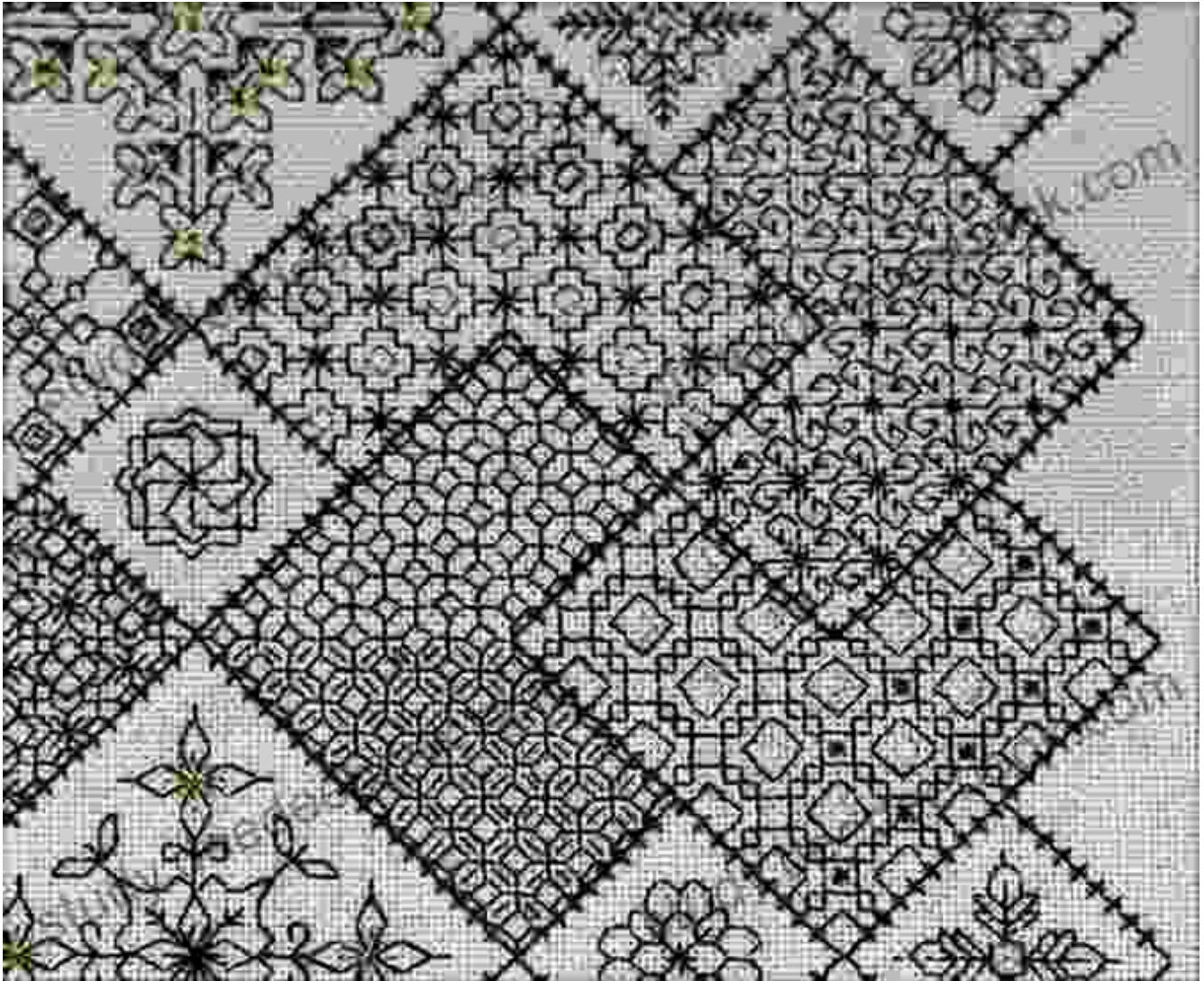


Fig. 2: Running stitch

The running stitch is a simple stitch that creates a dashed line. It is often used to outline shapes or create borders.

3. Holbein Stitch



The Holbein stitch is a variation of the running stitch that creates a more solid line. It is worked by alternating stitches over one and under two threads of fabric.

4. Stem Stitch

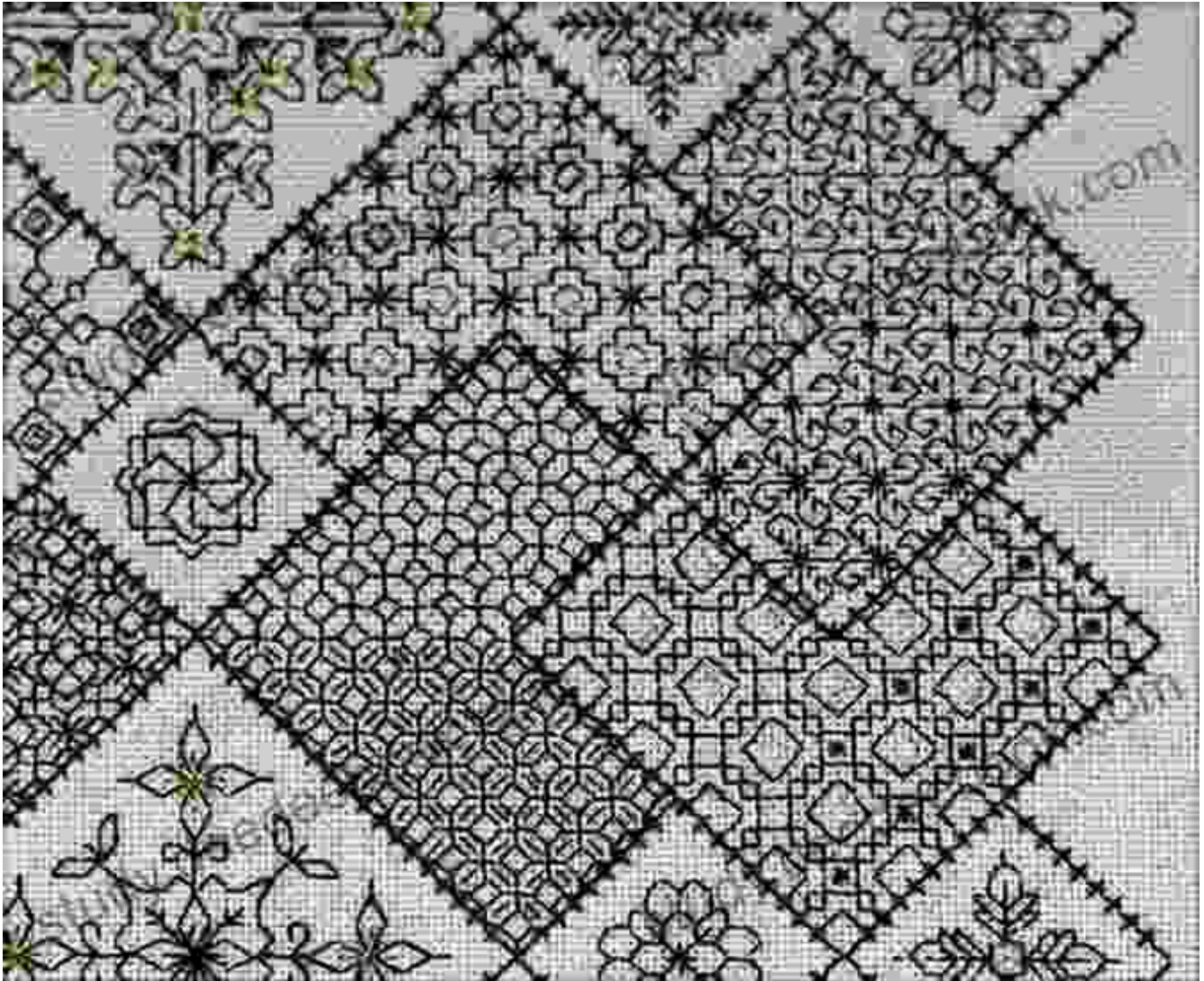
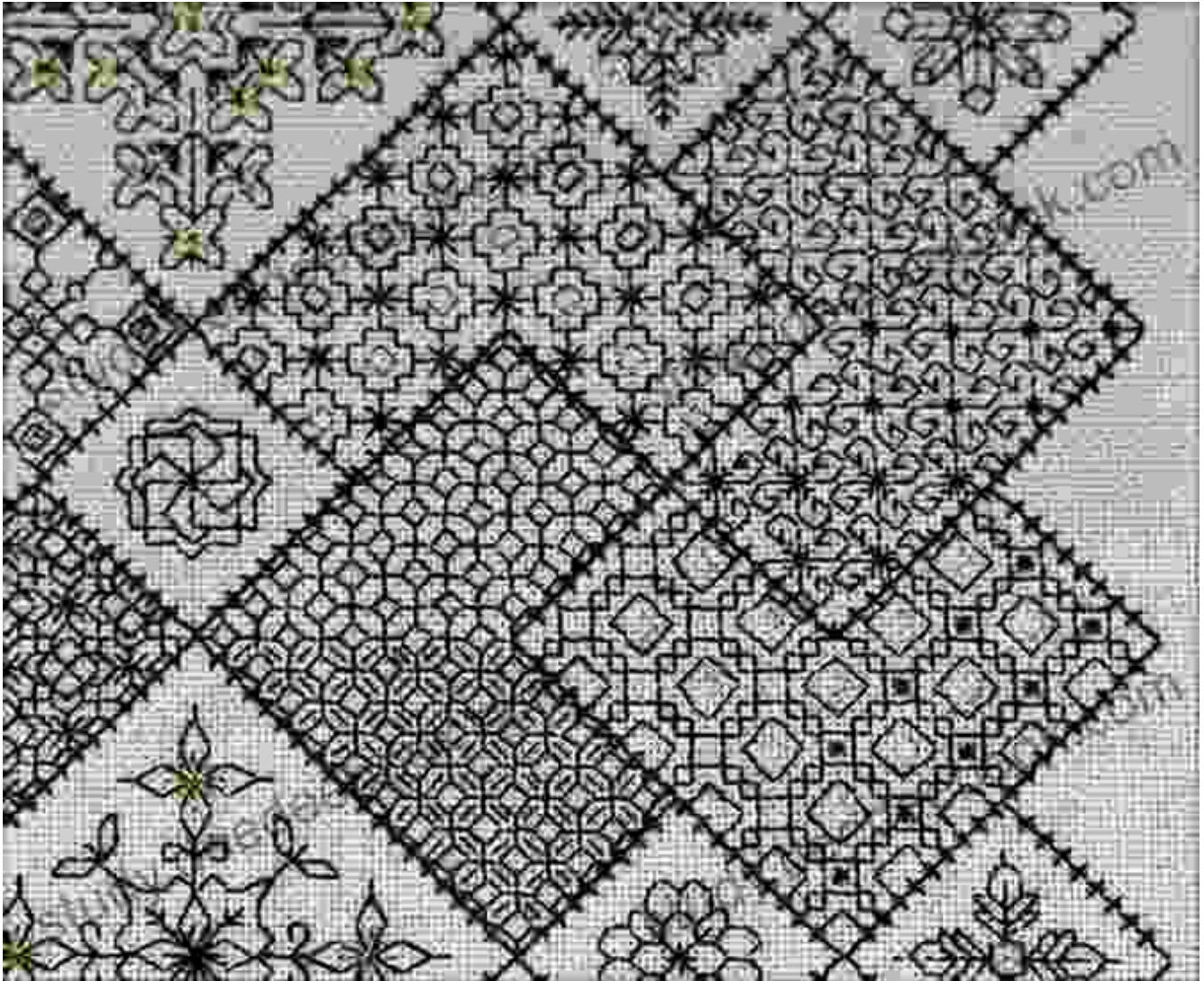


Fig. 4: Stem stitch

The stem stitch is a twisted stitch that creates a thick, rope-like line. It is often used to embroider stems or fill in areas.

5. Satin Stitch



The satin stitch is a smooth, solid stitch that is used to fill in larger areas. It is worked by covering the fabric completely with stitches that are close together.

Variations on Blackwork Stitches

1. Zigzag Backstitch

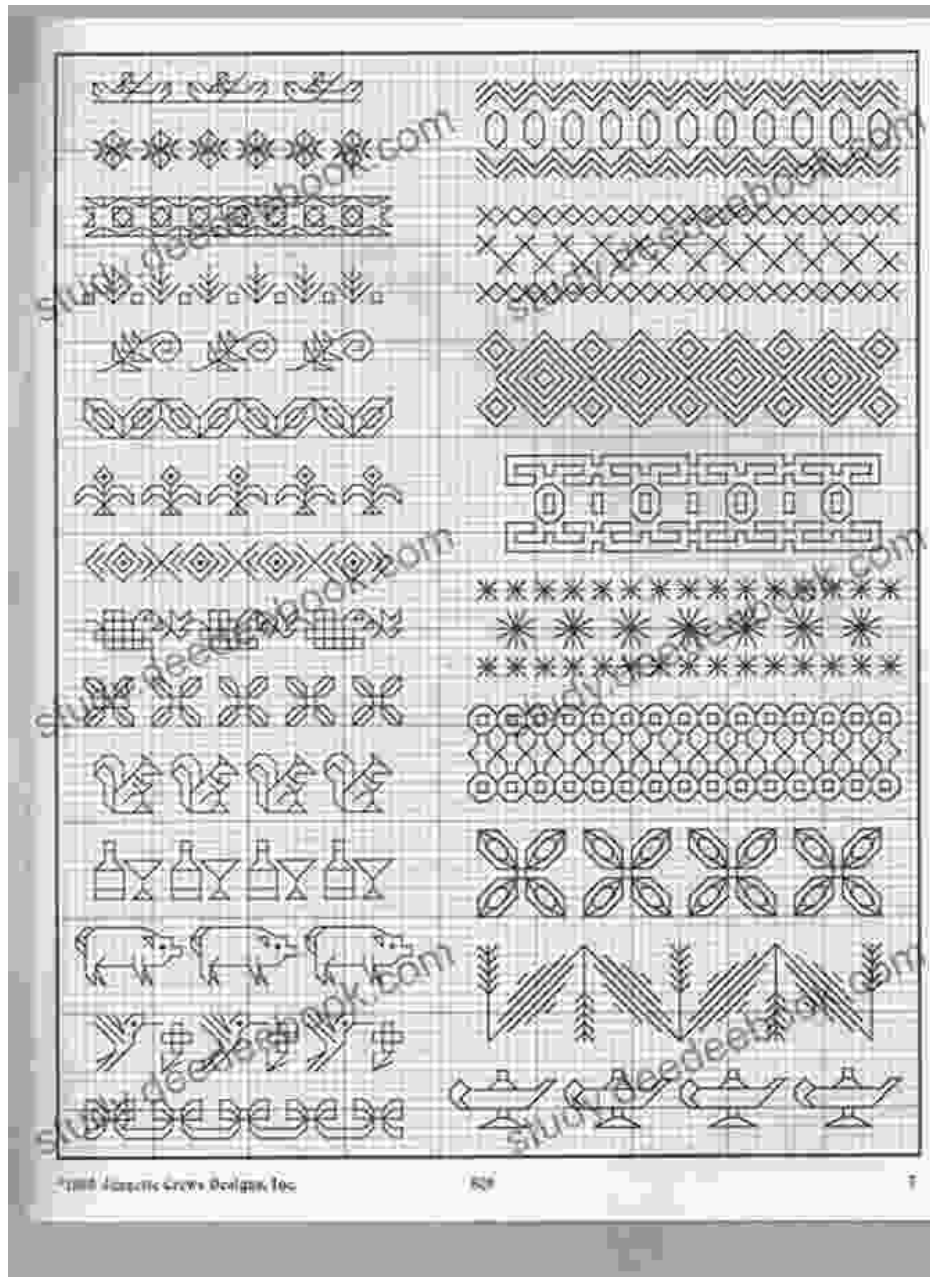
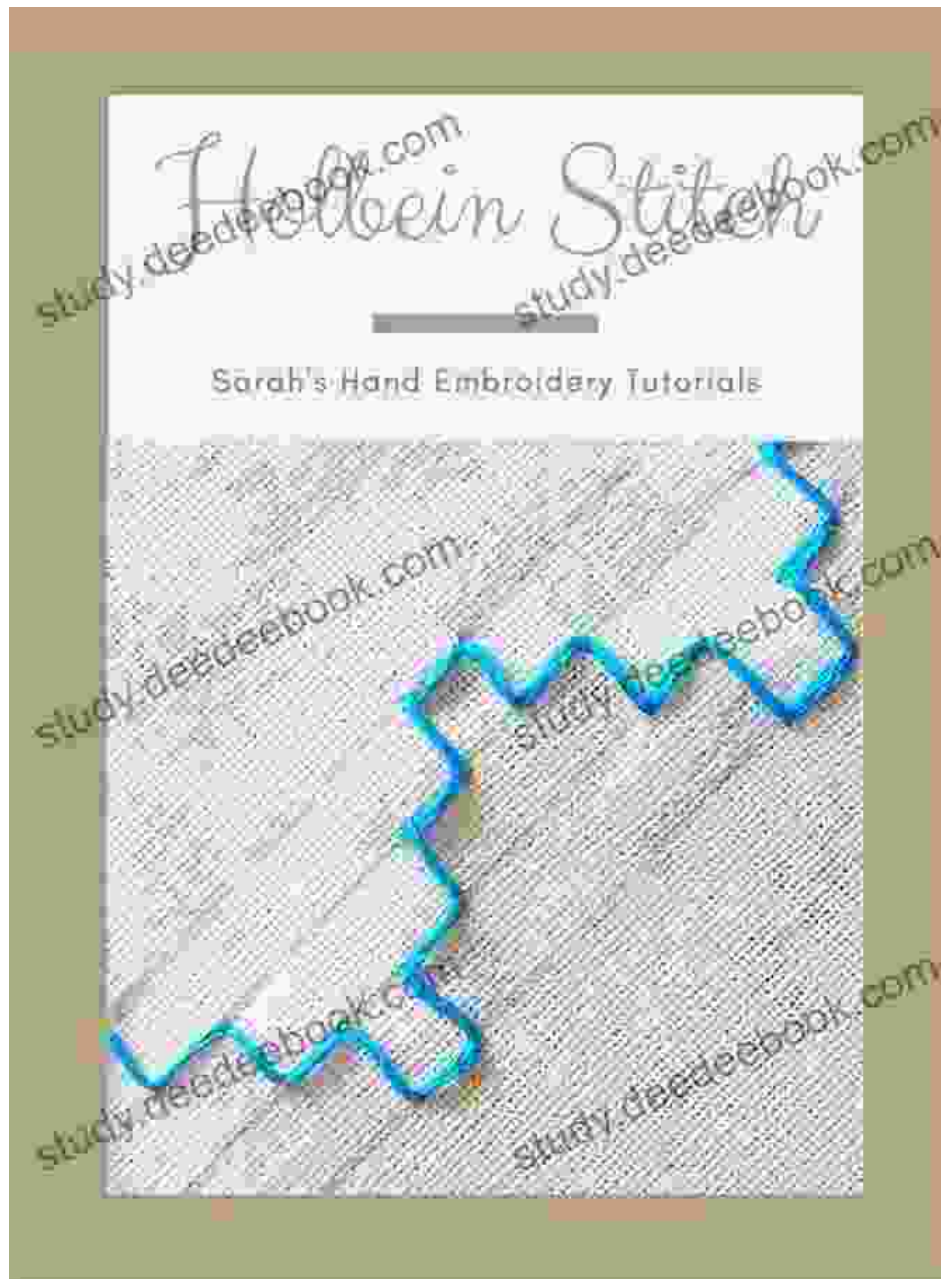


Fig. 6: Zigzag backstitch

The zigzag backstitch is a variation on the backstitch that creates a zigzag line. It is often used to add texture or embellish designs.

2. Double Holbein Stitch



The double Holbein stitch is a variation on the Holbein stitch that creates a thicker, more solid line. It is worked by alternating stitches over two and under four threads of fabric.

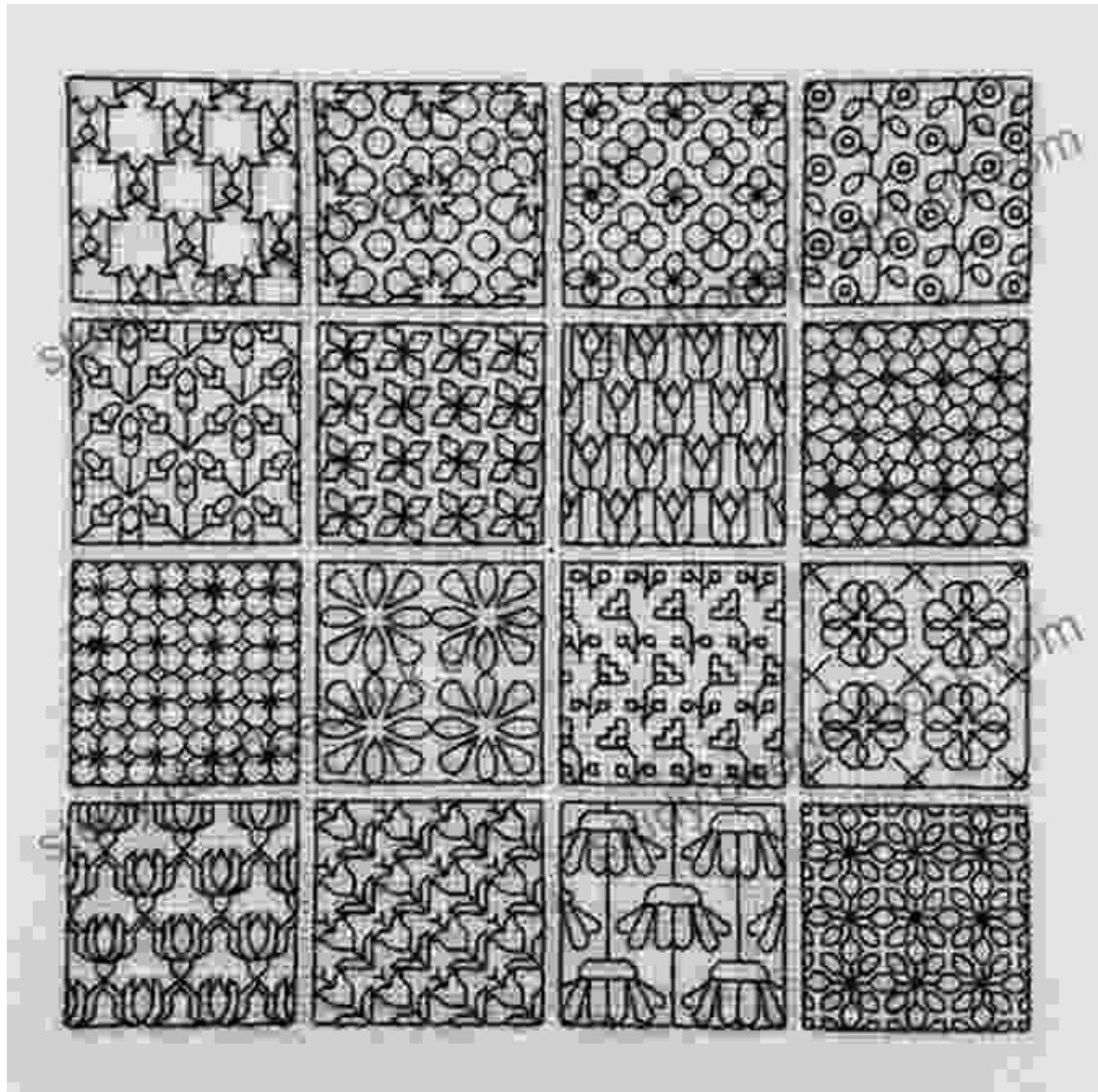
3. Twisted Stem Stitch



Fig. 8: Twisted stem stitch

The twisted stem stitch is a variation on the stem stitch that creates a twisted, rope-like line. It is worked by alternating stitches over one and under three threads of fabric.

4. Fly Stitch



The fly stitch is a small, V-shaped stitch that is often used to add texture or create shading. It is worked by bringing the needle up through the fabric and then inserting it a short distance away from the previous stitch.

Combining Blackwork Stitches

The beauty of blackwork embroidery lies in combining different stitches to create intricate patterns. Here are some tips for combining stitches:

- Use backstitch for outlines and solid lines.
- Use running stitch for dashed lines and borders.
- Use Holbein stitch for more solid lines and fills.
- Use stem stitch for thick lines and fills.
- Use satin stitch for large fills.
- Use variations on stitches to add texture and embellishments.
- Experiment with different combinations of stitches to create unique patterns.

The Blackwork Stitches Sampler provides a comprehensive guide to the essential stitches, their variations, and how to combine them to create stunning blackwork designs. Whether you are a beginner or an experienced embroiderer, this sampler will help you expand your skills and create beautiful blackwork pieces.

So gather your materials, choose a pattern, and embark on a journey into the intricate world of blackwork embroidery.



Blackwork Stitches Sampler Book 1 Blackwork Pattern

by Jonathan Black

★★★★★ 5 out of 5

Language : English

File size : 9029 KB

Print length : 168 pages

Lending : Enabled

Screen Reader : Supported

FREE

DOWNLOAD E-BOOK



Icky Island: An Unforgettable Adventure for Kids!

Introducing Icky Island: A Delightful One Act Play for Kids of All Ages In the realm of children's theater, the one act play format reigns supreme, captivating young...



Kentucky Sunrise: An Unforgettable Journey into the Heart of Kentucky

By Fern Michaels A Literary Journey into the Soul of Kentucky Kentucky Sunrise is a...